

AudionET

RCP

Remote Control Point

User's Manual

Contents

1	Software Audionet RCP	5
2	Installation	6
2.1	System requirements	6
2.2	Installation on a Microsoft Windows PC	6
2.3	Installation on an Apple Mac	6
3	Window Overview.....	7
4	RCP Menu	8
4.1	Audionet RCP	8
4.1.1	About Audionet RCP	8
4.1.2	Preferences	9
4.1.2.1	Design	9
4.1.2.2	Network.....	10
4.1.2.3	Advanced.....	11
4.2	Tools.....	12
4.2.1	Rescan Network.....	12
4.2.2	Select media renderer	12
4.2.3	Virtual Streaming Client.....	13
4.3	View	13
4.3.1	Full Mode and Compact Mode	13
4.3.2	Column Editor	14
4.4	Help.....	14
5	Device Setup.....	16
5.1	Global Settings	16
5.2	Network Settings.....	17
5.3	Device Info.....	19
6	Channel Settings	20
6.1	User Settings.....	21
6.1.1	Load User Setting.....	21
6.1.2	Save User Settings.....	21
6.1.3	Copy User Setting.....	22
6.1.4	Edit User Setting.....	22
6.2	Configuration.....	23
6.3	Loudspeaker Setup & Bass Manager	23

6.4	Equalizer	24
6.4.1	Equalizer adjustment	24
6.4.2	Copy and reset	25
6.4.3	Import CARMA EQ	25
7	UPnP Player.....	26
7.1	Library Browser	26
7.2	Playlist	29
7.3	Player	31
8	Radio	33
8.1	FM Radio.....	33
8.2	Internet Radio.....	34

1 **Software Audionet RCP**

The software Audionet Remote Control Point (RCP) offers a great variety of operation and setting options. Furthermore, the software is suitable to stream audio data (e.g. music) from your UPnP server to your Audionet device.

Audionet RCP is a user-friendly software providing a comfortable user interface for streaming audio data. If you use an Audionet network device (DNA, DNP, DNC or DNA 1), you are also able to control the entire device setup from your PC.

The current version of RCP is available for download on our website www.audionet.de for free and runs on all popular operating systems (Windows, OS X, Linux).

Function:

- Control playback on an UPnP renderer with audio data streamed from an UPnP server
- Manage (create, save and load) playlists
- Set up all device parameters of your Audionet device
- Input channel selection
- Volume control and muting, as well as switching on and off of Audionet devices
- Easy adjustment of equalizer with graphical visualization¹
- Loading and saving of user settings¹
- Saving and running FM radio stations¹

¹ Not DNA 1

2 Installation

2.1 System requirements

- Java Runtime Environment Version SE 6.0 or later

2.1.1.1 Windows 98/2000/2003/XP/Vista/7/8/10

- Mac OS X Version 10.7.3 or later

Audionet RCP is written in JAVA. Therefore it requires the JAVA Runtime Environment (JRE). If JRE is not already installed on your PC, please download the latest version free of charges from www.java.com.



Note

- Audionet RCP requires JRE-Version SE 6.0 or later.

2.2 Installation on a Microsoft Windows PC

Before installing Audionet RCP, please verify that JRE Version SE 6.0 or later is installed. If you use an older version, you can download the latest version from www.java.com.

To install Audionet RCP, please unpack "Audionet_RCP.zip" to the desired location on your computer. Once you have unpacked the file, you do not need further installation routines. Open the created folder "Audionet-RCP" and start the program using the file "Audionet-RCP.exe".

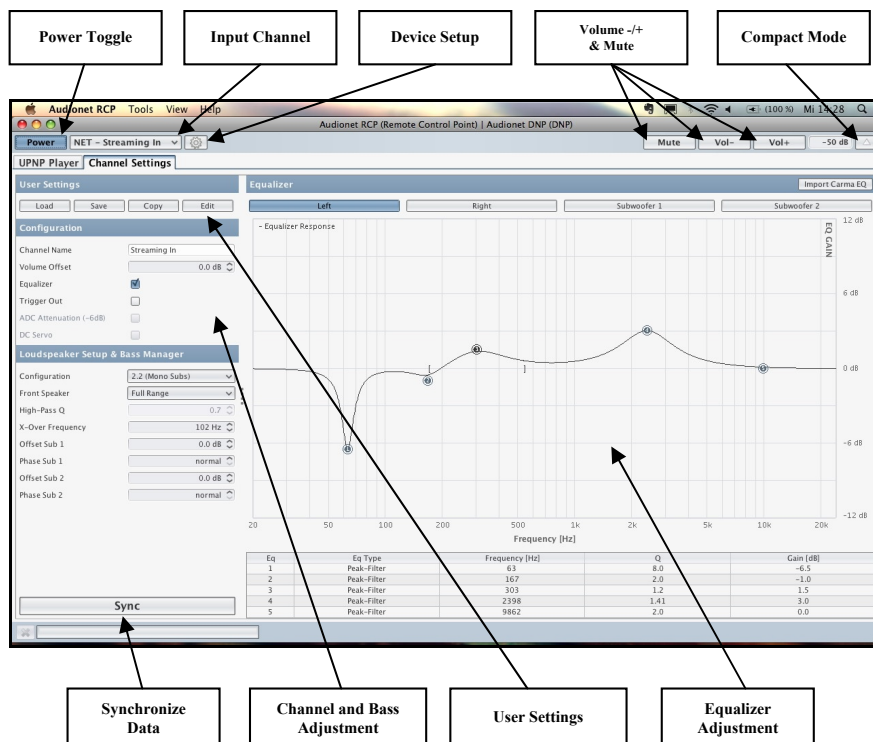
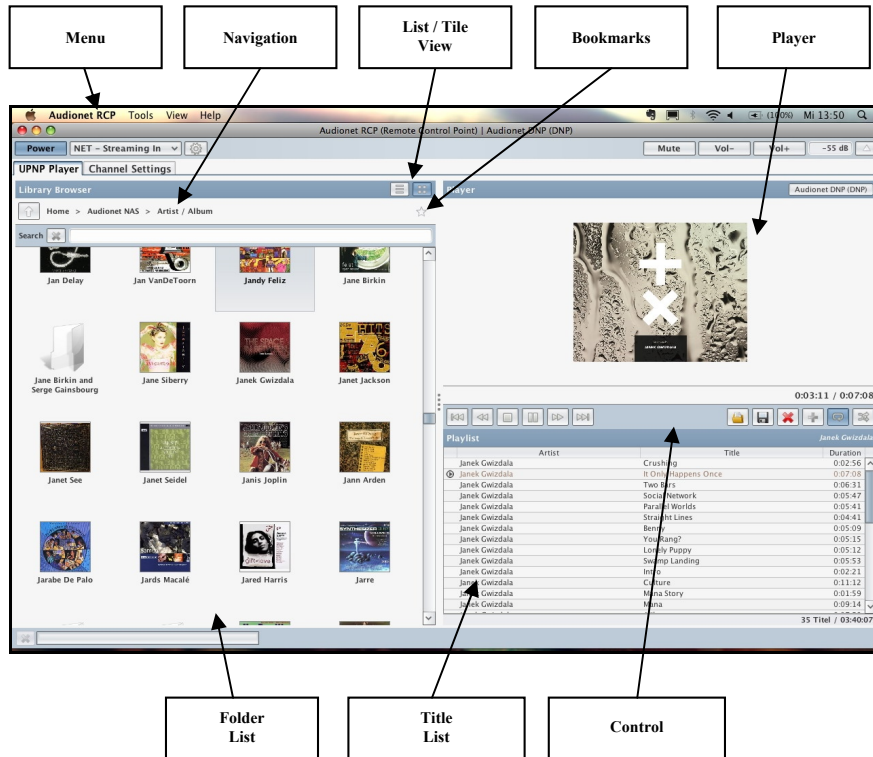
2.3 Installation on an Apple Mac

Before installing Audionet RCP, please verify that JRE Version SE 6.0 or later is installed. If you use an older version, you can use the auto update function or download the latest version from www.apple.com/support.

Unpack and store "Audionet_RCP.zip" on your local hard disc. Open the directory "Audionet-RCP" and choose the file "Audionet-RCP.app" to start the software Audionet RCP.

3 Window Overview

When you start Audionet RCP, the following main views are available. The functions are described in the following sections.

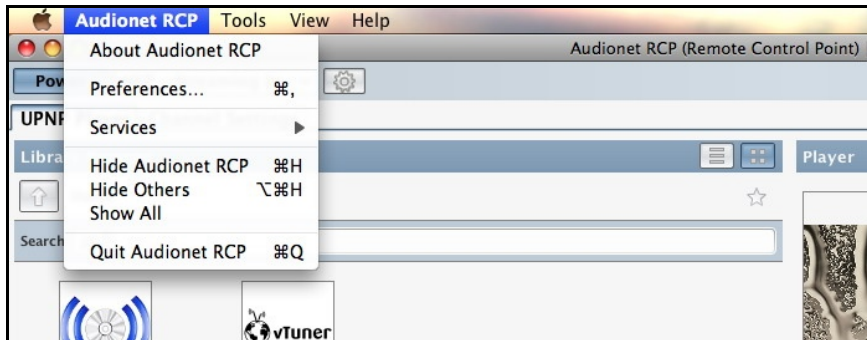


4 RCP Menu

In the menu bar you find all important information and settings of the software Audionet RCP.

4.1 Audionet RCP

This menu item provides two important subcategories: the information about the software and the preferences of Audionet RCP.

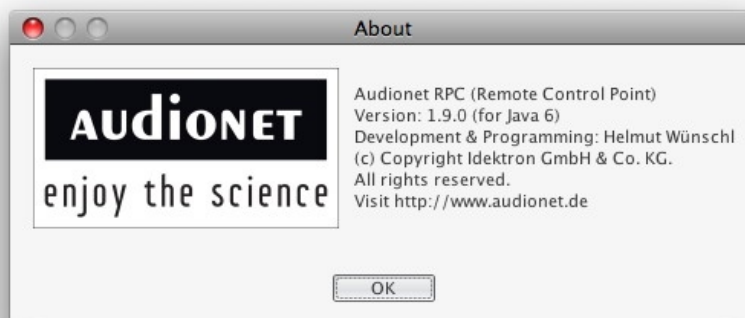


Note

- All screenshots have been created using an Apple Mac. On Windows menu entry "About Audionet RCP" can be found in **Help > About**, item "Preferences" is contained in **Tools > Preferences**.

4.1.1 About Audionet RCP

This window provides general information about the software, for example the version number.



Note

- The screenshots have been created using an Apple Mac. On Windows menu entry "About Audionet RCP" can be found in **Help > About**.

4.1.2 Preferences

Set up the preferences of the software Audionet RCP here.

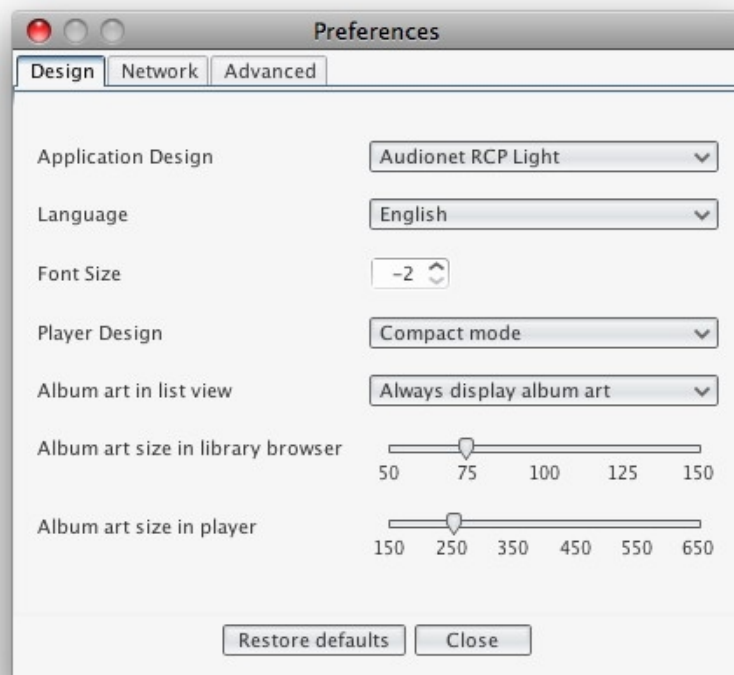


Note

- The screenshots have been created using an Apple Mac. On Windows menu item "Preferences" is contained in **Tools > Preferences**.

4.1.2.1 Design

With this dialog you can change the graphical appearance of the software Audionet RCP.



You might choose between two different application designs. Try both designs "Audionet RCP Light" and "Audionet RCP Dark", then select the one you prefer.

Select the language you want to work with (german/english). Furthermore you can customize the font size for the whole application. A restart of the software Audionet RCP is required for both settings to take effect..

Menu item *Player Design* changes the presentation of cover art and title information within the player window. *Compact Mode* shows additional title information next to the cover art, whereas *Album Art Mode* hides the title information and enlarges the cover art.

Change the setting for *Album art in list view* to determine the condition for the display of cover art in the library browser. Use the scroll bars below to set the album art dimension for both the library browser and the player. You can leave the menu box with the button **Close**.

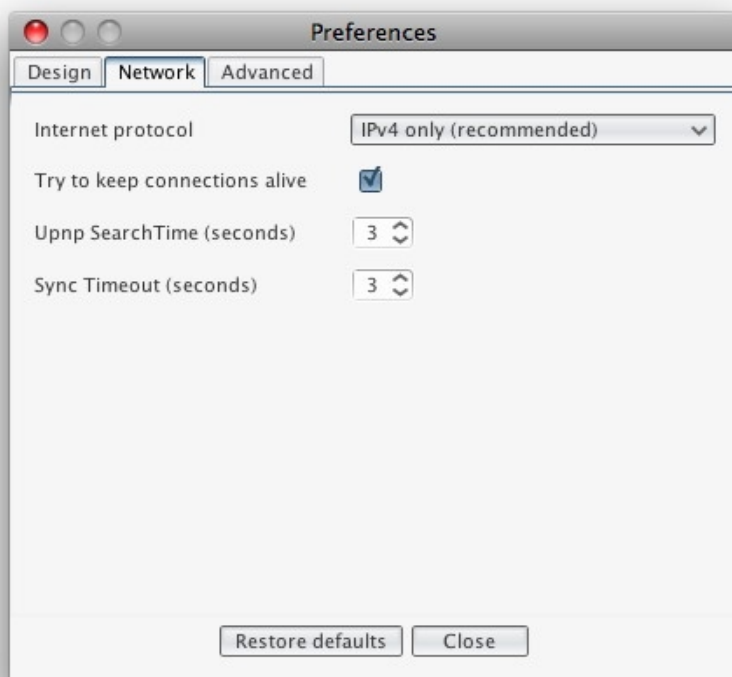


Note

- In case the UPnP server provides no album art you will see a standard image.

4.1.2.2 Network

Configure the network settings of the software Audionet RCP here. Usually the default settings will work well. If you experience problems when trying to connect to your Audionet device or to other UPnP devices, the settings for *UPnP Search Time* and *Sync Timeout* may be increased.



There is no need to alter these settings as long as there are no problems when connecting to your Audionet device or to other UPnP devices. If a problem occurs, the software Audionet RCP will notify you with an error message.

You might try to decrease the search time settings for a quicker startup of the software. If you choose the timeouts too short, setting up the connection to your Audionet device or to other UPnP devices might fail. If an error message occurs, increase the settings for the search times again.

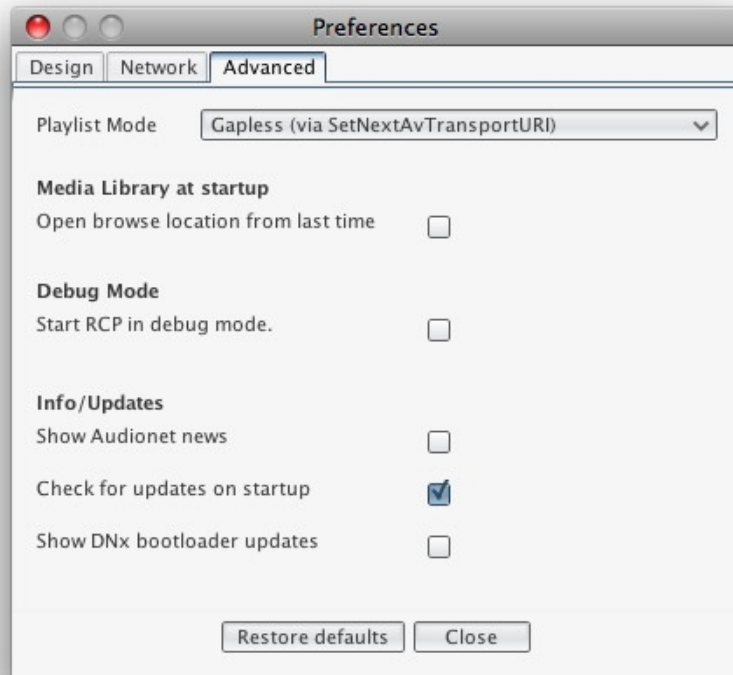


Note

- If connecting to your Audionet device or to other UPnP devices fails, confirm the error message with **Rescan Network**, or increase the search timeouts and repeat the procedure by opening **Tools > Rescan Network** or by pressing **F5** on your keyboard.

4.1.2.3 Advanced

The last menu in the preferences dialog sets up the advanced settings of the software Audionet RCP.



At first, set the playlist mode. Choose to activate or deactivate gapless playback, to force next title or to stop playback after each title.

With menu item *Media Library at startup* activated, the software saves your current position in the library browser as you quit the software. The next time you start Audionet RCP the software will automatically open this last position.



Note

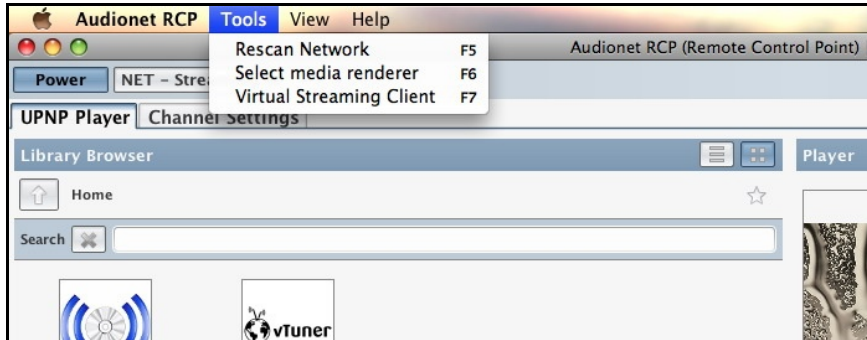
- Another way to simplify your browsing experience is the use of *Bookmarks*. The usage of bookmarks is explained in section "**7.1 - Library Browser**" on page 26.

The feature *Debug Mode* is a powerful tool for you to monitor and log reproducible errors within your streaming network. You have the opportunity to track down the cause of the problems and thus help solving these errors. In the main folder of the software another folder **log** will be created. The software is then going to track every activity concerning the software itself and connected UPnP devices. This information is stored in a log file. To solve the problems, please send the entire log folder (as zip archive) or individual log files with a detailed description of the error and your setup (operating system, network type, router, NAS servers, NAS server software, media renderer, etc.) to our support team at service@audionet.de. We will work on a solution immediately.

The last three checkboxes on this configuration page determine if software Audionet RCP looks for news from Audionet, program or firmware updates and bootloader updates at startup.

4.2 Tools

Execute functions to control the connection between the software Audionet RCP and your Audionet device or other UPnP devices, or start the virtual streaming client.



4.2.1 Rescan Network

Use this menu item if an error occurs when searching for UPnP devices. If connecting to your Audionet device or to other UPnP devices fails, confirm the error message with **Rescan Network**, choose **Tools > Rescan Network** or press **F5** on your keyboard.

In case all devices are connected (wired or wireless) correctly and the error message occurs more frequently please try to increase the search time settings as described in section *"4.1.2.2 - Network" on page 10*.

4.2.2 Select media renderer

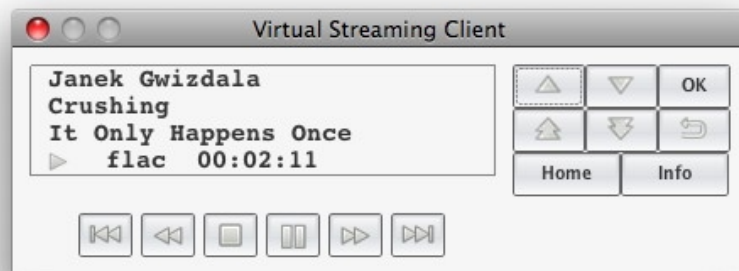
If you run more than one UPnP renderer in your network, you can switch between them. Use this menu item to select the device you want to control. Open path **Tools > Select media renderer**. You are able to control several devices at the same time.



Open the drop-down menu and select the renderer you want to control. Check the tick box *Default media renderer* to set the selected device as default device. When you start the software Audionet RCP it will always connect to this device if it is available. With the **Apply** button you apply and save your settings. Leave the dialog box with the **Cancel** button, thus the adjustment is not stored.

4.2.3 Virtual Streaming Client

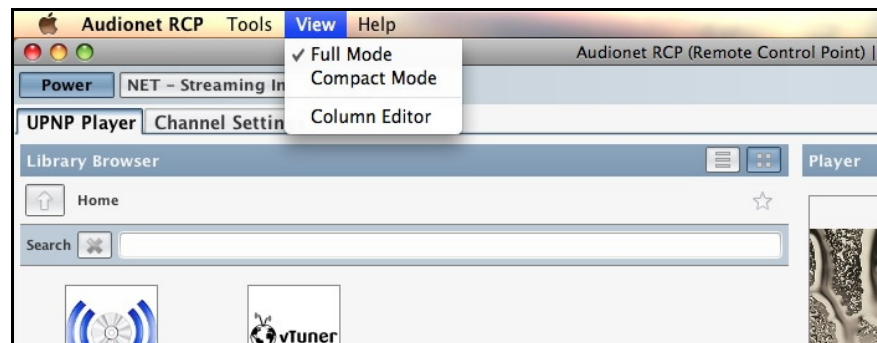
Menu item *Virtual Streaming Client* and the following window are only available if you are controlling an Audionet device.



The dialog box provides the same information as the device's display. The buttons of the virtual streaming client match those of your Audionet system remote control *Harmony One*.

4.3 View

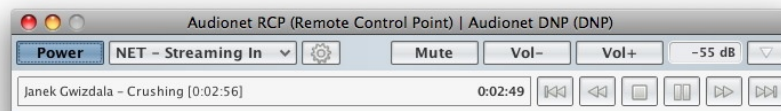
Set up the presentation mode of Audionet RCP here.




4.3.1 Full Mode and Compact Mode

When you select *Full Mode*, the software Audionet RCP provides all controls available. This is the factory default setting.

If you need to use your screen for other programs, you might want to select *Compact Mode*. Audionet RCP appears in the following window.



The presentation and information is reduced to a minimum, yet the most important controls are available.

Select **View > Full Mode** or **View > Compact Mode** to switch between both views. Another possibility is to click the button  in the upper

right of the program window. This button is available in both views at the same position and switches between both.

4.3.2 Column Editor

Use the *Column Editor* to configure the displayed title information. Set up the appearance of the information for the library browser and the playlist independently. The following window shows selectable information.



Set up your desired information and quit the user dialog with **Close**.

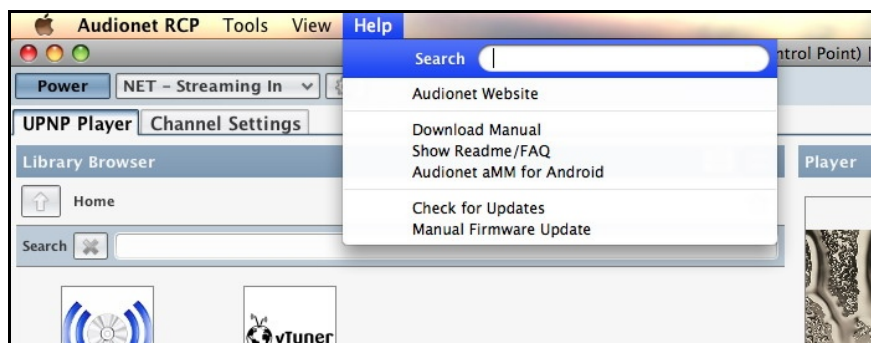


Note

- Software Audionet RCP only presents information provided by the UPnP server. If information is incorrect or missing, please check and correct the metadata of your audio files and / or the setting of your UPnP server.

4.4 Help

Menu **Help** offers access to different kinds of support. The first four entries open your default internet browser and lead to the corresponding content.



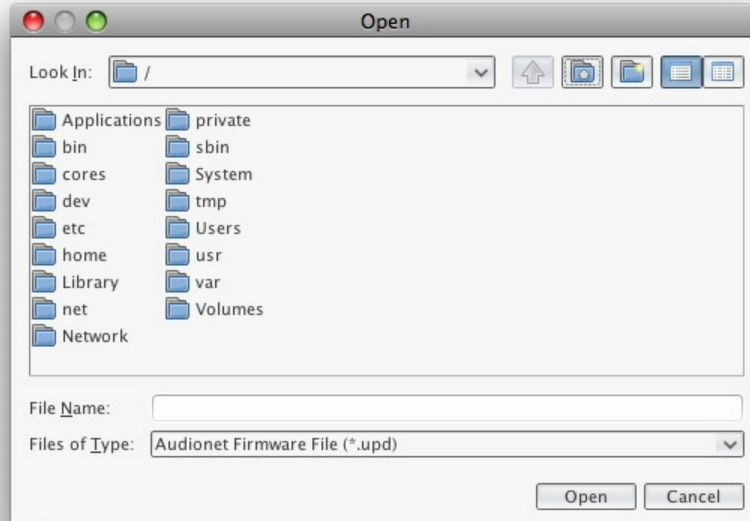
Click item *Check for Updates* to manually check for software updates. If there is a newer version available for download, software Audionet RCP will notify you.



Note

- If you are controlling an Audionet device, item *Check for Updates* also checks for available firmware updates of your Audionet device.

If you are controlling an Audionet device and you have an accessible firmware update file on your PC, you can update your Audionet device manually. Click on *Manual Firmware Update* and the following window opens up.



Navigate through your file system to the .upd-file and open it. The firmware update will then be executed.

5 Device Setup

Next to the **Power** button and the drop-down menu for the input selection there is a symbolized gearwheel. Click on it to open up the dialog for device setup.

The dialog contains three subcategories. These will be explained in the following.

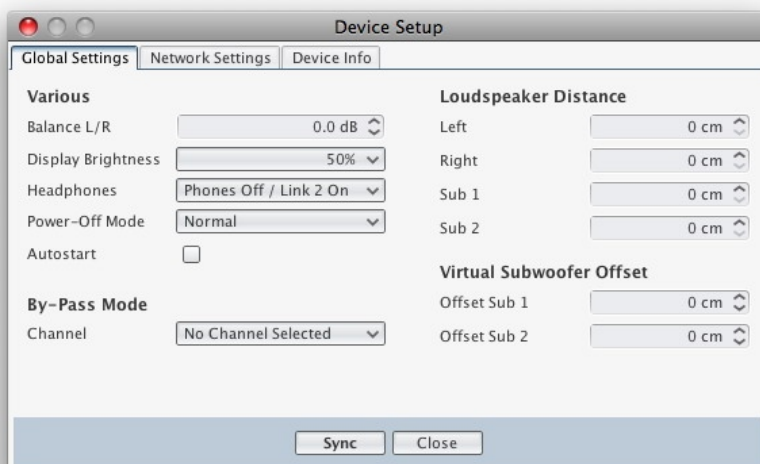


Note

- The buttons **Power**, the drop-down menu for the input selection and the symbolized gearwheel are only available if you are controlling an Audionet device. Otherwise the buttons are grayed out and disabled.

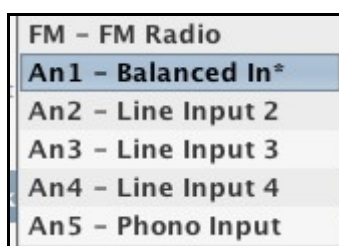
5.1 Global Settings

Adjust the global settings in the first tab of the dialog. The displayed settings correspond to the sections *Global Setup* and *Delay Manager* in the user's manual of your Audionet device.



Open the drop-down list *Channel* in menu item *By-Pass Mode* to select one of the analog input channels as the by-pass channel. The By-Pass Mode was primarily intended to integrate the overwhelming sound quality of Audionet devices (DNA, DNP) into an existing home cinema setup or to expand an existing excellent stereophonic system based on an Audionet device to a complete home cinema setup without missing out on the qualities of Audionet devices. Note that the input signal of the by-pass channel will be passed through to the outputs and amplifiers with its full level (0 dB).

In the list for channel selection software Audionet RCP marks the by-pass channel with a symbolized star. The following picture shows that **An1 – *Balanced In*** is selected as by-pass channel here:



For more information refer to section ***By-Pass channel*** in the user's manual of your Audionet DNA or Audionet DNP.

To send your settings to your Audionet device, click the **Sync** button. Now your adjustments are transmitted and applied.

To leave the device setup window, click the **Close** button. Non-synchronized adjustments will be lost.

5.2 Network Settings

The second tab provides adjustment of the network settings. Compare the settings in this dialog box with the settings from chapter ***Network Setup*** in the user's manual of your Audionet device. The following dialog shows the factory defaults.



When you have set up your network settings, transmit and save your data with the **Apply** button. The adjustments are then stored in your Audionet device and activated immediately.

Use the button **Load factory defaults** to return to the factory defaults. Transmit the factory defaults to your Audionet device with **Apply**.

The following illustration shows a configuration for a password-protected WLAN connection. Note that DHCP is deactivated here.

The screenshot shows a 'Device Setup' window with three tabs: 'Global Settings', 'Network Settings' (selected), and 'Device Info'. Below the tabs are two buttons: 'Apply' and 'Load factory defaults'. The 'Network Settings' section contains two columns of configuration options. The left column includes 'Network Mode' (set to 'wireless'), 'DHCP' (unchecked), 'IP Address' (192.168.178.222), 'Subnet mask' (255.255.255.000), 'Gateway' (192.168.178.001), 'DNS Server' (192.168.178.001), 'SSID' (Listening Room), and 'Wireless Security Mode' (WPA2PSK). The right column includes 'WPA Pass Phrase' (masked with dots), 'WEP Authentication' (set to 'OPEN'), 'WEP Key Index' (0), and four empty text boxes for 'WEP Key 0', 'WEP Key 1', 'WEP Key 2', and 'WEP Key 3'. A 'Close' button is located at the bottom right of the window.



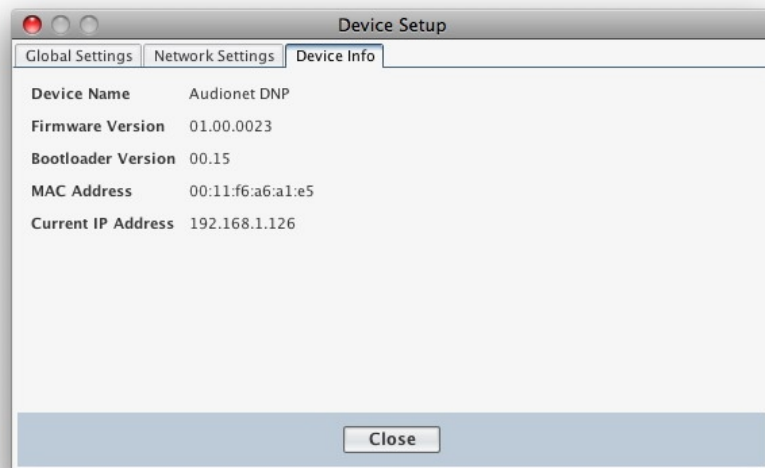
Note

- Everytime you change the settings and you want to save them, click the **Apply** button. Otherwise all changes will be lost as soon as you quit the user dialog with **Close**.

5.3 Device Info

Select the last tab to see further information on your Audionet device. The window provides the following information.

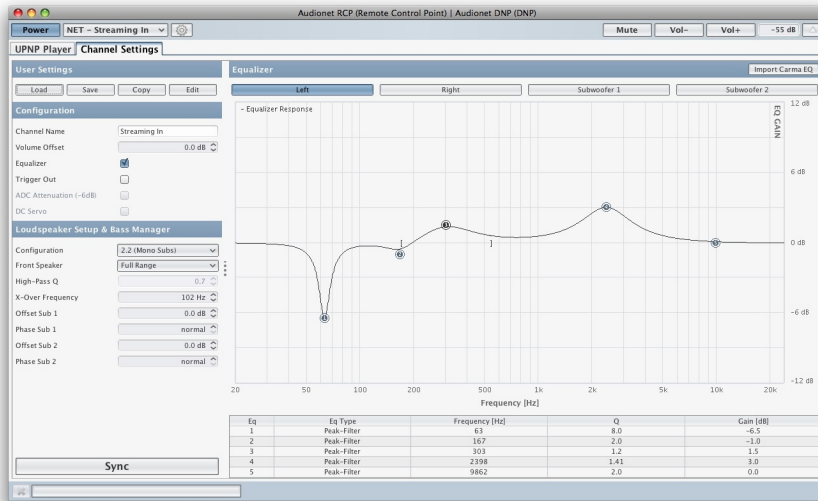
Device Name:	exact label of the device
Firmware Version:	version number of the firmware currently running on the device
Bootloader Version:	version number of the bootloader currently running on the device
MAC Address:	MAC Address of the device
Current IP Address:	currently assigned IP address (static IP address assigned manually or IP address assigned dynamically with DHCP)



Click on the **Close** button to quit the *Device Setup* dialog.

6 Channel Settings

Select the main tab **Channel Settings** to set up the adjustments for the currently selected channel. Detailed information on every parameter can be found in the corresponding section of the user's manual of your Audionet device. The tab **Channel Settings** is only available if you are controlling an Audionet device.



Note

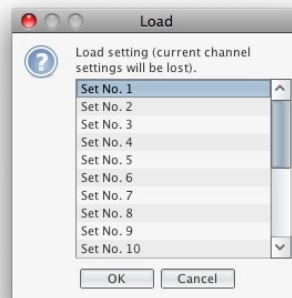
- Confirm your settings with the **Sync** button on the bottom left side.
- If a setting is grayed out, it is not available for the selected input channel.
- All adjustments made in this tab always apply to the currently selected input channel.

6.1 User Settings

In the upper left of the RCP window, you see the settings buttons **Load**, **Save**, **Copy** and **Edit**. These refer to the section *User Settings* in the user's manual of your Audionet device.

6.1.1 Load User Setting

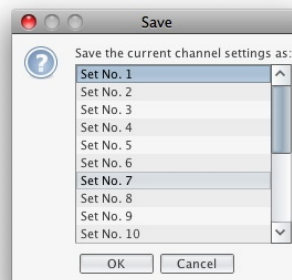
Pressing the **Load** button opens the following selection window.



Select the user setting you want to load and click **OK**.

6.1.2 Save User Settings

The button **Save** opens the window shown below.



Select the user setting you want to store in and click **OK**.

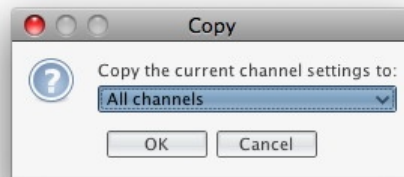


Note

- Saving will overwrite any settings in the memory slot. The old data is lost and cannot be retrieved.

6.1.3 Copy User Setting

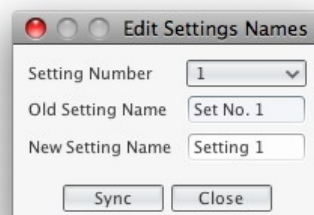
Pressing the **Copy** button opens the following selection window.



With this feature you are able to copy your settings from the current input channel to specific channels or to all other input channels. If you set up the equalizer, loudspeaker and bass manager for the NET input, for example, you can copy your settings easily to all other input channels.

6.1.4 Edit User Setting

Use the **Edit** button to change the name of your setting. The following window opens up.



First, select the memory slot (number) you want to rename. Now enter the new setting name. Confirm with the **Sync** button. The new name is adopted. Leave this dialog with the **Close** button.



Note

- Changing the memory slot's name has no effect on the stored data.

6.2 Configuration

The configuration field contained in the channel settings provides basic channel adjustments. These adjustments correspond to section **Channel Setup** in the user's manual of your Audionet device.

With the software Audionet RCP you have faster and easier access to the channel setup.



Note

- Confirm your settings with the **Sync** button on the bottom left side. If a setting is grayed out it is not available for the selected input channel.

6.3 Loudspeaker Setup & Bass Manager

Also, the loudspeaker and bass (subwoofer) adjustments are available for each input channel separately. To set up all items look up section **Bass Manager** in the user's manual of your Audionet device.



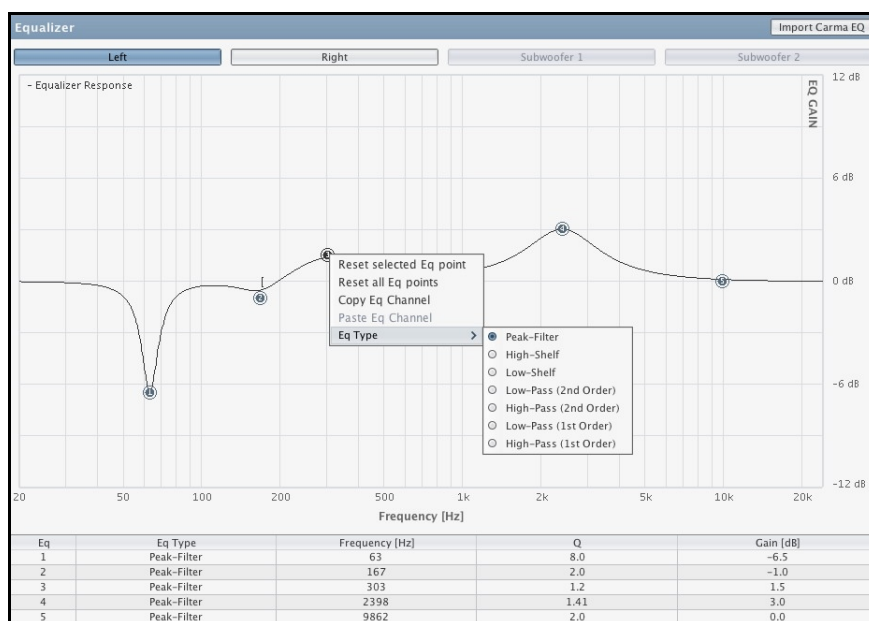
Note

- Confirm your settings with the **Sync** button on the bottom left side. If a setting is grayed out it is not available for the selected input channel.

6.4 Equalizer

To activate the equalizer (EQ) select the checkbox in the configuration area, located on the left side of the RCP window, while channel setting tab is selected. The equalizer area will now show the EQ curve. With factory settings still active you see a horizontal line with five points. Detailed information on each EQ band (point) is listed in the table below the graph. Above the graph you are able to select the channel. Set up the EQ for each channel separately.

The equalizers for Subwoofer 1 and 2 are not available (grayed out) in the following illustration, because the speaker configuration is set to 2.0.



6.4.1 Equalizer adjustment

Use the left mouse button to select an EQ band (point). Right-click in the EQ window and select the filter type in menu item *EQ Type* you want to use for this band.

Now, pick up the EQ point (by holding down the left mouse button) to move it (left/right) to the desired frequency and (up/down) to the desired gain/loss. To check your settings, observe the numerical values in the table below.

In the picture above you can see square brackets on the 0 dB line. These illustrate the filter quality (Q). Pick one of the brackets (by holding down the left mouse button) and slide (left/right) to change the filter quality. To check your setting, observe the numerical value in the table below. The graph adjusts to the changing data in real time.

Apply your setting by clicking the **Sync** button at the bottom left.

6.4.2 Copy and reset

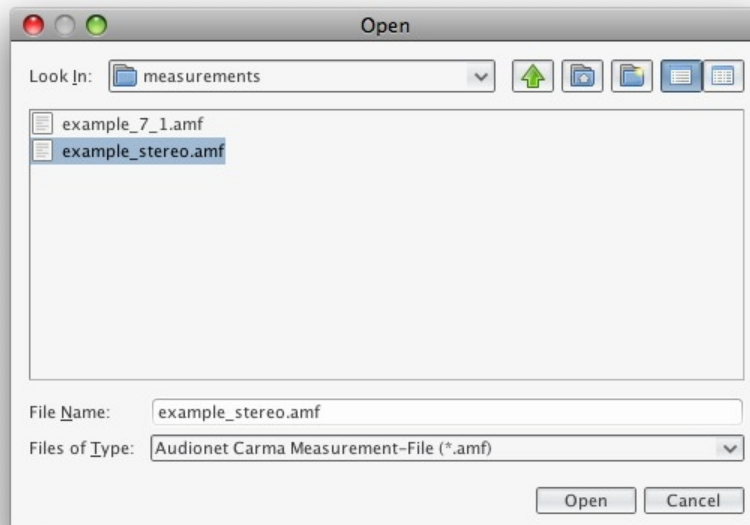
Pressing the right mouse button within the EQ area opens the EQ menu.

Reset the selected EQ band here. Click on *Reset Selected EQ-Band*. Reset all five bands of the EQ at the same time by selecting *Reset All EQ-Bands*.

To copy the settings of all 5 bands, go to *Copy EQ-Channel*. Now, for example, you can select the right channel. There you click again with the right mouse button in the EQ area and select *Paste EQ-Channel*. You will see the copied equalizer settings of the left channel. Apply your settings by clicking the **Sync** button at the bottom left.

6.4.3 Import CARMA EQ

In the EQ window there is the **Import CARMA EQ** button available on the top right. Click on this button to load equalizer settings to your Audionet device which have been created and saved with the room acoustics analysis software Audionet CARMA. Audionet CARMA is licensed as freeware. Further information and the current version are available on our website www.audionet.de.



Navigate to the desired .amf-file within your file system and click on the **Open** button. The equalizer settings will be loaded for the currently selected input channel. Click on **Sync** to apply the settings to your Audionet device.

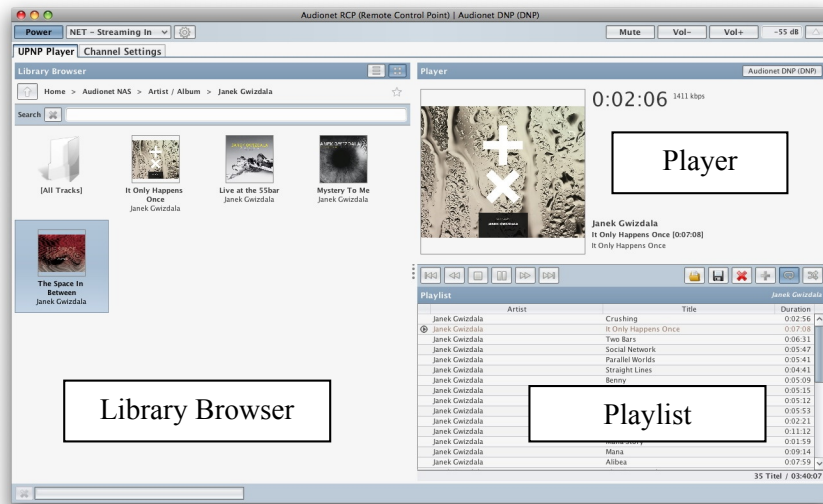


Note

- Save your previous equalizer settings to a user setting, so you can refer to it later.

7 UPnP Player

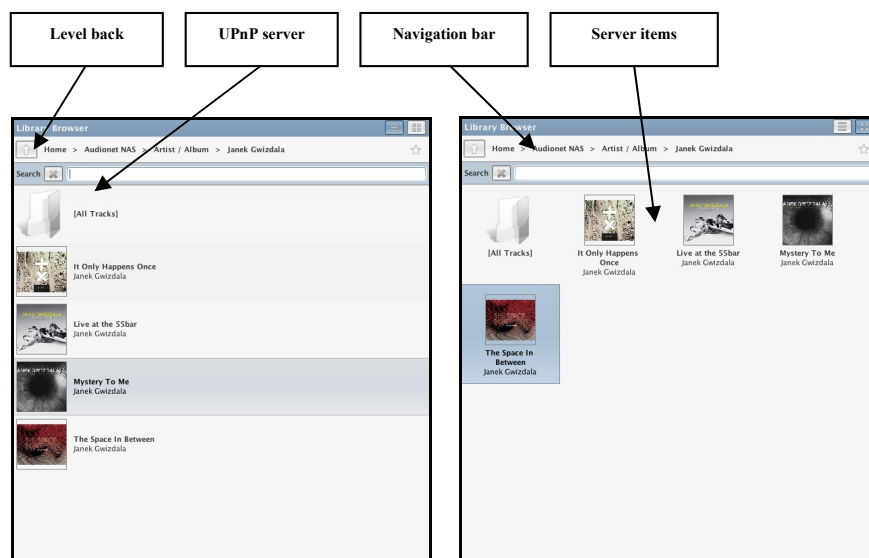
While controlling an Audionet device, the tab **UPnP Player** will be selected automatically as soon as you switch to input **NET – Streaming In**. If you are connected to another UPnP renderer, the **UPnP Player** tab will always be visible.




The window is separated into three divisions: the Library Browser, the Player and the Playlist.

7.1 Library Browser

All information shown in the Library Browser is provided by the UPnP server. The way information is presented depends on the UPnP server and its settings. The software Audionet RCP has no influence.

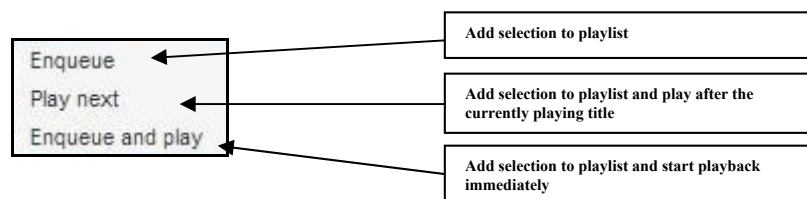


With the level back button  you jump backwards through the tree structure of the UPnP server. For example, if you click the level back button in one of the example windows, the folder *Album/Artist* will be displayed.

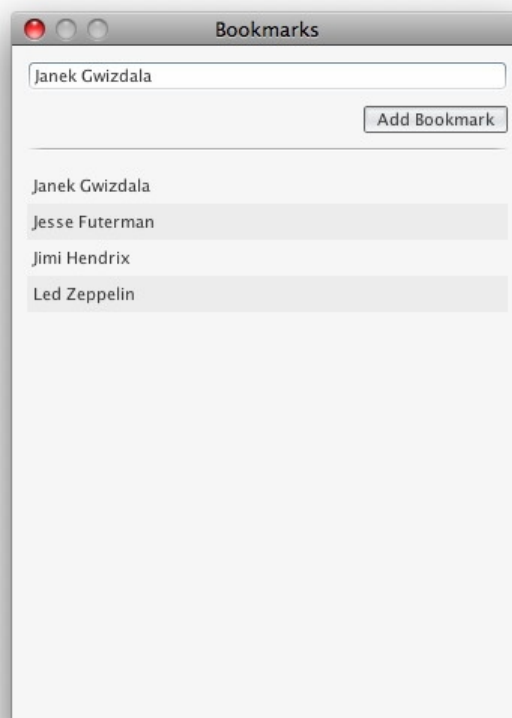
In the navigation bar you will see the current directory you are within the server structure. By clicking on a directory you will switch there directly. Navigate through the library browser until you find the desired artist, song or album.

Double-clicking a title will attach it to the current playlist and it is played back immediately. If you just want to add a title to the current playlist, grab it with the mouse and place it into the playlist. This procedure is called "drag and drop". The drag and drop procedure can also be used with whole albums or artists.

Alternatively, you can click on the song, album or artist with the right mouse button and the following pop-up menu opens.



Furthermore, you have access to the bookmark function of the software Audionet RCP. If you wish to navigate to your favorite artists or albums faster, you can save these as bookmarks. Click on the symbolized star in the library browser and the following window opens.



It is possible to save a bookmark for every desired position in the server structure.

To save the current position, click on the symbolized star and enter an appropriate name for your bookmark. Save your bookmark by clicking on the **Add Bookmark** button.

To open an already saved bookmark, you also have to click on the symbolized star in the library browser. The same window opens up. Now, however, you simply have to click on a saved bookmark and the previously saved directory will be opened in the library browser.

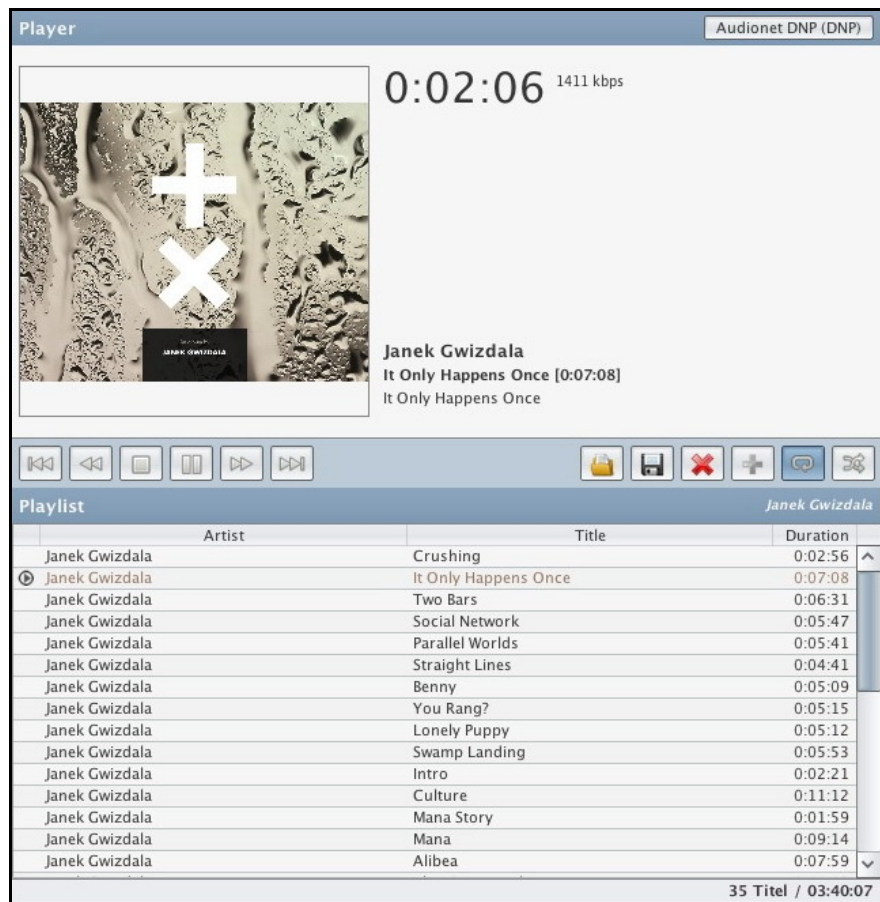
If you right click on a bookmark, you have two possibilities to choose from. You are able to delete the bookmark, or you can save the bookmark as the startup directory for the library browser. Selected as a startup directory, the bookmark will be opened immediately everytime the software Audionet RCP starts up.



Note

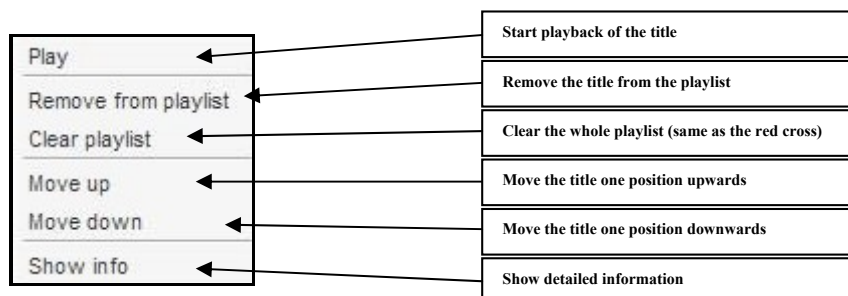
- Bookmarks save the current position in the library browser. That means that you have to navigate to every bookmark directory at least once to save that position.
- If you switch your UPnP devices on and off regularly, the use of static IP addresses is recommended. Otherwise bookmarks might link to a directory that does not exist anymore at the saved address. Then the saved bookmarks are useless. With static IP addresses this problem can be avoided.

7.2 Playlist




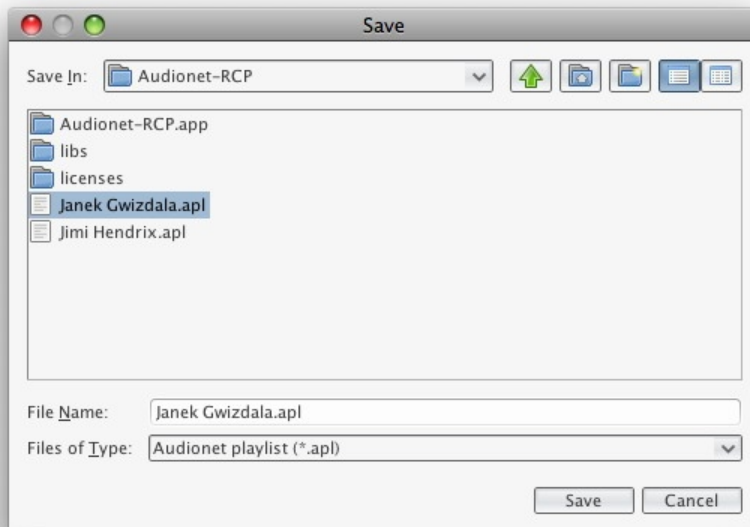
The play/stop indicator marks the title which is currently playing or being stopped .


If you right click on a title the following pop-up menu opens. This menu allows you to remove the title from the current playlist or to move it up or down in the playlist.

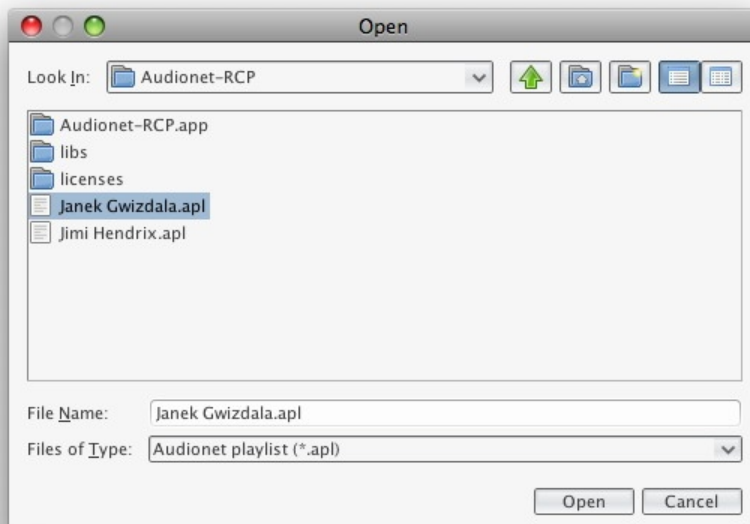



You can also move a title by "drag and drop" directly to any position of the playlist.

Every playlist can be stored. Click on the disk icon . In the next dialog box, enter the desired playlist name. It will be displayed as the name of the playlist in the upper right corner of the playlist area. Click on the **Save** button to save your playlist to the selected directory.



If you wish to load a playlist, click on the folder icon  to open the following dialog box. There you select the playlist you want to load. Apply your selection with **Open**.



Clicking the red cross icon  clears the current playlist. A playlist that is not saved is lost and can not be restored.

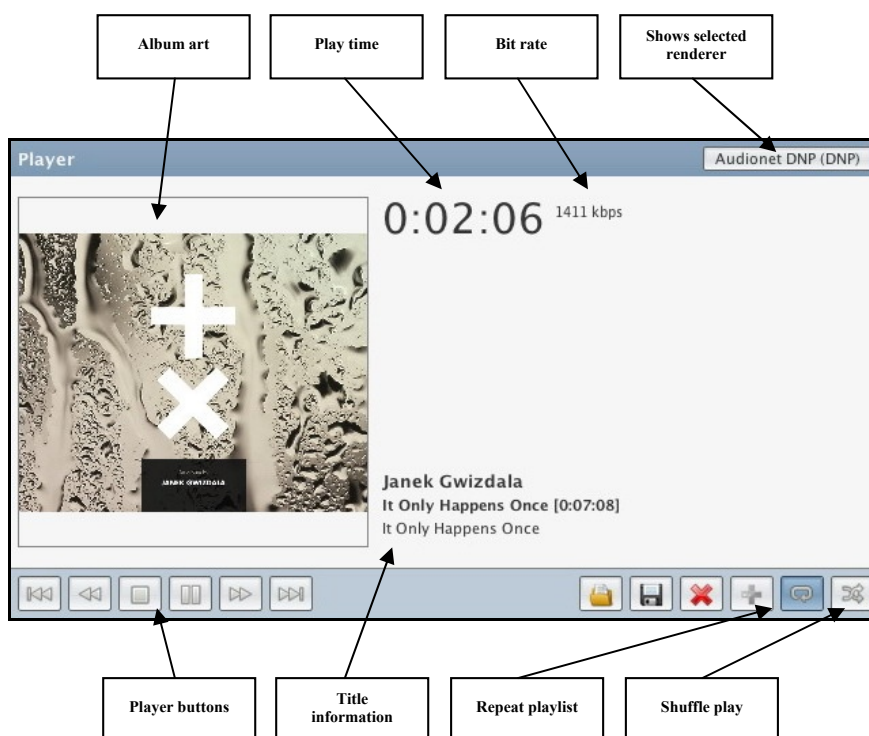


Note

- If you switch your UPnP devices on and off regularly, the use of static IP addresses is recommended. Otherwise playlists might link to titles that do not exist anymore at the saved addresses. Then the saved playlists are useless. With static IP addresses this problem can be avoided.

7.3 Player

The player area provides information on the title which is currently playing. In addition, all the control functions are available here.



Player button:



Plays or pauses the current title (icon switches)



Stops playback



Rewind or fast forward through the currently playing title



Jumps - within the playlist - to the next or previous track

Play modes:

Repeat: Repeats the entire playlist



Shuffle: Plays randomly all tracks in the playlist, each track only once

Track information and album art:

This information is provided by the UPnP server. The shown information is the meta tag data of the audio file which is read and distributed by the UPnP server.

Selected Renderer:

See section "*4.2.2 - Select media renderer*" on page 12.

8 Radio

With the software Audionet RCP you are able to listen to FM radio as well as to internet radio.

8.1 FM Radio

Software Audionet RCP has to be connected to an Audionet device that includes a FN radio module in order to listen to FM broadcasting services.

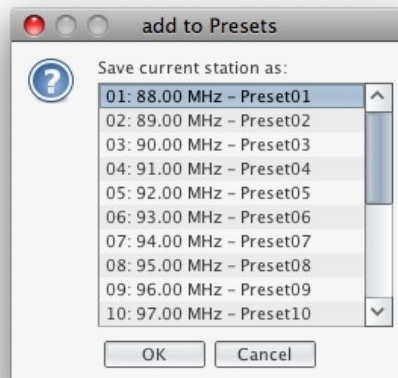
For this purpose, select input channel *FM Radio*. The following window will be displayed:



The display provides information about the currently tuned frequency and the station name (RDS Program Service). Beneath the frequency display you will find the RDS Radio Text in case this feature is supported by the FM station. With the two buttons on the right side of the window you are able to tune up or down the frequency.

Use the drop-down menu *Presets* to open one of your saved presets. Open the menu by clicking on it and select one of the 20 list items.

If you have selected a frequency manually and want to save it to your presets, click on the button **add**. The following window opens:



Now choose one of the 20 memory slots and apply with **OK**. Your now saved preset can be opened by using the previously described drop-down menu *Presets*.



Note

- In case the currently tuned FM station supports RDS Program Service information, the name of the FM station is automatically used as name for the preset you want to save. If no RDS Program Service information is available the default name "PresetXY" is used, with "XY" being the number of the preset.
- Depending on the way the RDS information is individually transmitted by the tuned FM station it could take several seconds until RDS information like Program Service and/or Radio Text is received, processed and displayed.

8.2 Internet Radio

Listen to the internet radio service *vTuner* with software Audionet RCP connected to an Audionet device. With the internet radio service *vTuner* it is possible to select your favourite radio stations from a steadily growing number of worldwide stations. You have to register with an account at *vTuner* to save your favourite stations and to receive personalized recommendations.

To register an account, open the website <http://audionet.vtuner.com>. You will be going to visit this address every time you wish to edit your favourite radio stations. As long as you do not have registered an account with your Audionet device, you have to click on *Register Here* right below the login. Additionally you will be requested to enter your E-Mail address, to choose a personal passphrase and to enter an access code.

Receive your access code as follows: With a stable connection established to your Audionet device, select NET input and open path **Home > Internet Radio > Get Access Code** within the library window in the UPnP tab. The code consists of eight digits and can be found in the third line.

As soon as you registered an account for your Audionet device, you are able to log in to the website <http://audionet.vtuner.com> and edit your favourite radio stations. Furthermore you are able to add radio stations to your favourites by right-clicking on the station name within software Audionet RCP. Search for all available radio stations using the library browser of the software Audionet RCP. The operation and usage of radio stations corresponds to the usage of audio files (see section **"7 - UPnP Player"** on page 26).



Note

- If you are not controlling an Audionet device, listen to radio services supported by your UPnP server or NAS station. The RCP is only able to show information which is delivered by the UPnP server.

Errors and omissions excepted. Specifications and design are subject to changes without prior notice.

AUDIONET is a trademark of Idektron GmbH & Co KG

Engineered and produced by:
Idektron GmbH & Co. KG, Alboinstraße 36 - 42, 12103 Berlin, Germany
www.audionet.de
kontakt@audionet.de